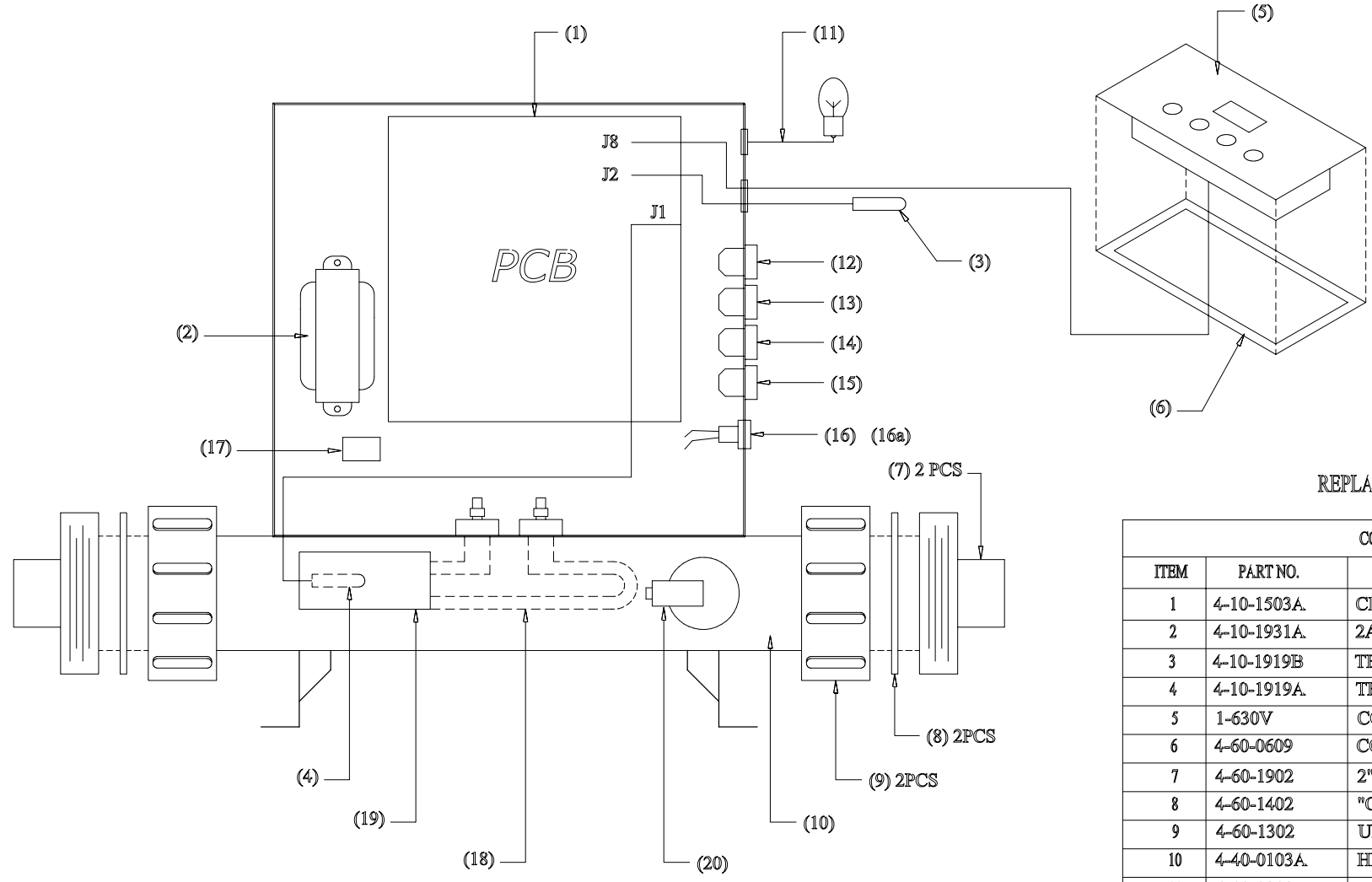


YOUR SPA PAK MAY NOT HAVE ALL OPTIONS SHOWN.
 IF A GFCI IS NOT INCLUDED IN YOUR SPA PAK, ONE
 MUST BE INSTALLED IN YOUR POWER SUPPLY.



REPLACEMENT PARTS

COMPONENTS		
ITEM	PART NO.	DESCRIPTION
1	4-10-1503A.	CIRCUIT BOARD
2	4-10-1931A.	2A. TRANSFORMER
3	4-10-1919B	TEMP. SENSOR 3/8"
4	4-10-1919A.	TEMP. SENSOR 1/4"
5	1-630V	CONTROL
6	4-60-0609	CONTROL GASKET OBLONG 2X5
7	4-60-1902	2" TAIL PIECE
8	4-60-1402	"O" RING 2" FLAT
9	4-60-1302	UNION NUT
10	4-40-0103A.	HEATER BODY
11	4-10-0208	LIGHT CORD
12	4-10-1702	OZONE REC.
13	4-10-1704	PUMP 1 REC.
14	4-10-1705	PUMP 2 REC.
15	4-10-1701	IF 120V BLOWER REC.
15	4-10-1706	IF 240V BLOWER REC.
16	4-10-0502	FUSE HOLDER
16a	4-10-0501D	0.5A. FUSE
17	4-10-1729B	RELAY
18	4-10-0707A.	4kW ELEMENT
	4-10-0710	IF 5.5kW ELEMENT
19	4-40-0201	CAPILLARY COVER
20	4-10-1812	PRESSURE SWITCH

MINI MAX DIGITAL SELF DIAGNOSTIC SPA PAK
 PARTS LIST DWG # 4-30-1414A.

Rev. No.	DATE	DESCRIPTION	BCN
1	Feb 21/2001	CHANGED SCHEMATIC	E2002074